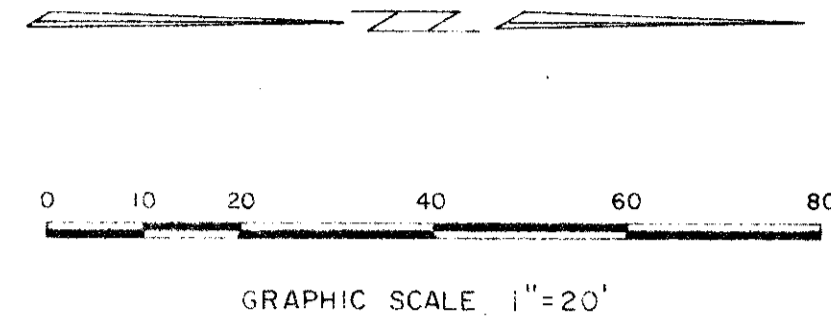


SWEETWATER SECTION ONE

(A PORTION OF TRACT 7B-A, BOCA CHASE, RIVIERA P.U.D.)
A REPLAT OF A PORTION OF TRACTS 27, 28 and 29 "FLORIDA FRUIT LANDS COMPANY'S
SUBDIVISION NO. 2" OF SECTION 1, TOWNSHIP 47 SOUTH, RANGE 41 EAST (1-102 P.B.C.)
AND A PORTION OF THE N.E. 1/4 OF SECTION 2, TOWNSHIP 47 SOUTH,
RANGE 41 EAST, PALM BEACH COUNTY, FLORIDA

Prepared By:
HELLER - WEAVER and CATO, Inc.
5667 Coral Gate Boulevard
Margate, Florida 33063
Order No. 7179

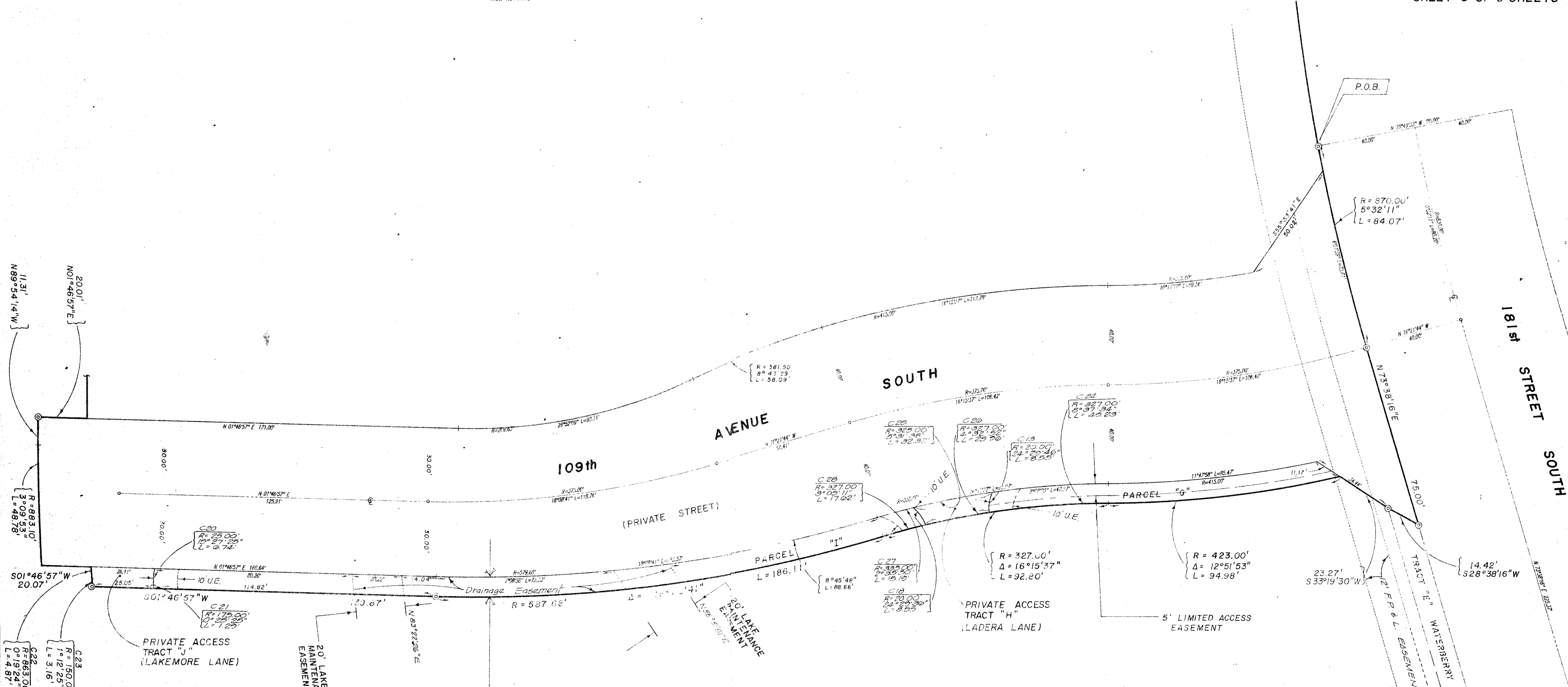


SHEET 3 OF 3 SHEETS

DRAWING NUMBER

DRAWING NUMBER

DRAWING NUMBER



THE 8' BICYCLE PATH EASEMENT IS BOUNDED ON THE WEST BY THE EAST R/W LINE OF 109th AVENUE SOUTH AND BOUNDED ON THE EAST BY THE BOUNDARY LINE OF THIS PLAT AND RUNS CONTIGUOUS FROM THE SOUTH LINE OF PARCEL "J" TO THE NORTH LINE OF PARCEL "G".

0303-305

53/139

SWEETWATER SEC 1